

accuracy of Mr. Wallace's views on these Ornithopteræ, expressed in his paper on the Papilionidæ of the Malayan region.

PAPILIO ERECHTHEUS.

Papilio erechtheus, Donovan. Ins. N. Holl. t. xiv., xv.

Mainland of New Guinea.

A female, agreeing with specimens from Moreton Bay, Australia.

PAPILIO EUCHENOR.

Papilio euchenor, Guér. Voy. Coq. Zool. p. 273, t. 13. f. 3.

Mainland of New Guinea.

PAPILIO POLYDORUS.

Papilio polydorus, Linn. Syst. Nat. i. p. 746; Wall. Trans. L. S. xxv. p. 42.

Mainland of New Guinea.

These specimens have a light spot on the primaries; and the secondaries are more elongated than in *P. leodamas*, Wall., the species we should have expected to find here. They do not differ from the ordinary type of *P. polydorus*.

4. Description of a new Species of the Orthopterous Genus
Phylloptera from Madagascar. By ARTHUR G. BUTLER,
F.L.S., F.Z.S., &c.

[Received May 23, 1878.]

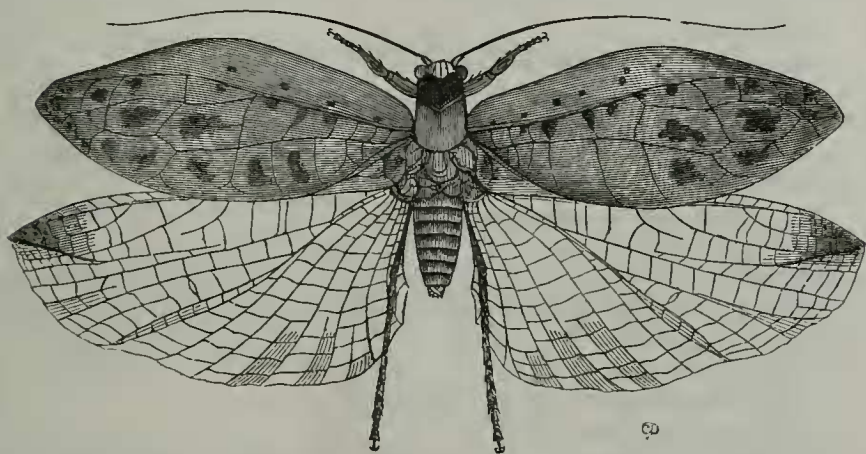
The genus *Phylloptera* is one of the numerous interesting groups amongst the Orthoptera which exhibit a striking resemblance to leaves, some of them being imitated in a green condition, and others when faded.

The species now before me is an admirable example of this adaptation to surrounding conditions, the tegmina being quite like sear and yellow leaves in which the brown patches of decay have begun to appear.

PHYLLOPTERA SEGONOIDES, n. sp.

Tegmina of the normal elliptical form; horn yellow, with the veins and borders more or less tinted with burnt sienna; the whole of the areoles, excepting those along the anterior border, with central irregular dull greyish-brown spots or patches; under surface paler, with greenish borders; wings hyaline-white, veins yellowish, the normal black-dotted horn-yellow cuneiform patch bounded by an oblique brown line at the very acuminate apex; frons testaceous; eyes (in the dead example) chocolate-brown; antennæ black, with testaceous scape; back of head sordid whitish, with two divergent grey lines from behind the antennæ; pronotum black, whitish in front, with the sides, posterior third, and a V-shaped central

marking pale castaneous; meso- and metathorax glassy greyish, with two or three opaque whitish spots; abdomen sordid testaceous, sides of the venter whitish; pectus and posterior coxæ whitish; anterior femora with the upper or interior surface castaneous at the proximal end, otherwise greyish, spotted with cream-colour, with two small tuberculose castaneous dots and a short longitudinal black dash, three black denticles along the supero-interior margin, inferior or exterior surface deeply grooved, paler, the distal half sordid whitish, with an irregular longitudinal brown dash; tibiæ with the proximal half whitish, expanded, compressed, and marked on each side by two deep pyriform impressed spots, distal half cylindrical, castaneous in the centre and black at the extremities, interior margin with three fine spinules; tarsi black, the terminal joint



Phylloptera segonoides.

castaneous, with black claws: middle pair of legs longer than the anterior pair, the tibiæ yellowish, banded with black across the centre and at each end, without the impressed markings of the anterior pair: posterior legs with the femora compressed, tawny, with an external longitudinal blackish lateral streak, inferior margin deeply grooved, its exterior edge with four short black denticles; tibiæ above flattened, slaty grey, with the distal end and a lateral series of triangular spots cream-coloured, twelve black denticles along the inner and eight along the outer margin, otherwise castaneous, subcylindrical, with about eleven delicate little spinules along the inferior margin; tarsi as in the other legs. Length of the body 23 millims., of the tegmina 91 millims., of the wings 96 millims.

This species much resembles the New-World genus *Segona*, but differs markedly in the structure of the anterior pair of legs.